

# ***SEGMENT SPRAY TECHNOLOGY :*** ***Easy and Reliable***

## Main advantages

- Works like inkjet printer
- Easy programming of production range
- Automatic rinsing and circulation valve
- No nozzle blockage
- High speed



## EDITORIAL

**"A**utomotive industry is requiring from forging company to install faster and faster production capacities. This expectation pushes a lot of forging company around the world to design their new and retrofit lines in order to reach the target of excellence, speed, quality and reliability.

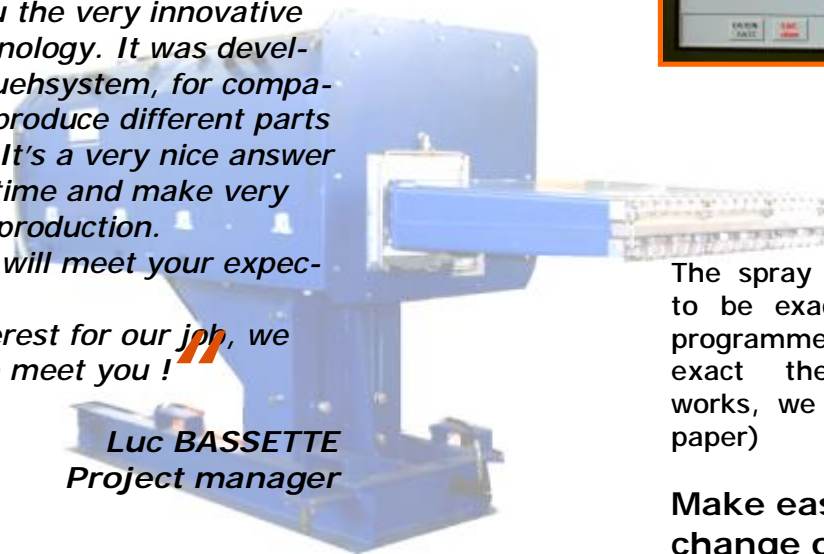
**EAST ENGINEERING**, as your partner, works with the most famous partners in order to invent, design, build, deliver to you and erect forging solution for your company in compliance with these requirements.

Let us introduce you the very innovative segment spray technology. It was developed by **JERKO Spruehsystem**, for companies which want to produce different parts on the same press. It's a very nice answer to reduce the downtime and make very easy the change of production.

We hope this paper will meet your expectations.

If you have any interest for our job, we would be pleased to meet you !

**Luc BASSETTE**  
Project manager



## As much easy than your inkjet printer

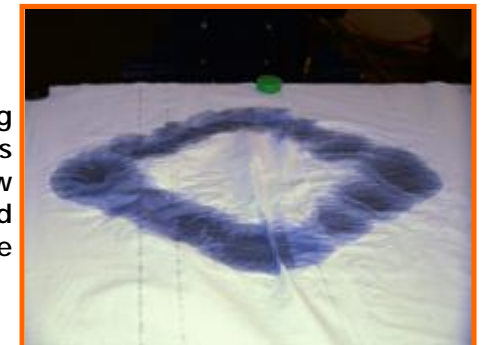
Imagine that the lubrication spray adjustment was as much easy than to print a document with your office's inkjet printer.



With the help of **JERKO Segment Spray Technology**, it's possible now.

On the spray program display, just click on dots to reproduce the tools stamp.

The spray picture is going to be exactly like it was programmed (To show how exact the spray head works, we sprayed on the paper)

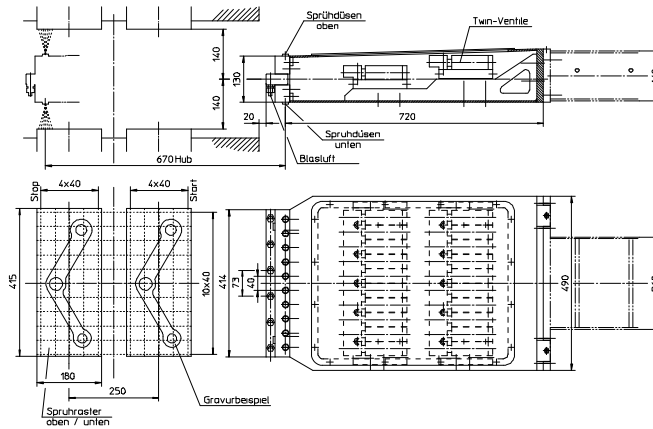


**Make easy your change of production parts !**

## PRODUCT

### JERKO Segment Spray Technical characteristics

- Very Fine atomizing for good cooling results
- Less consumption of lubricant
- No nozzle blockage because lubricant gets mixed into air just before the nozzles
- All lubricant touching part made off stainless steel
- Frame, housing etc. are powder coated for high corrosion resistance
- High speed of manipulator and very precise driving by servo drive motor
- Mixing and supply unit equipped with automatic circulation valve (every 10 Mn)
- Automatic rinsing valve for long period of downtime
- Automatic refill system (automatic rate adjustment)
- SIEMENS electrical components
- EC Norm



CRANK AND HYDRAULIC PRESSES

---



DIE BOLSTERS AND CASSETTES

---



AUTOMATION-ROBOTIC

---



SPARE PARTS

---



PERIPHERAL EQUIPMENTS

---



**EAST**  
ENGINEERING

*Make easy your project !*